



Affordable, Roller Shades

Features

- Nino Shades are designed to blend seamlessly into the window, making them nearly invisible when in place.
- Available in 5 colors: White, Warm White, Black, Char Brown and Clear Anodized.
- Adjustable end limits using the included remote control, or through TRO.Y when connected to a Helen.
- Industry standard light gaps, as small as 3/4", depending on size and configuration
- Group control through included RF remote, third-party integration, or through Troy when connected to a Helen.
- Sunscreen, Light Filtering and Black-out fabrics available.
- The new Dual protocol motor from Screen Innovation enables seamless programming and control via Zigbee and RF remote controls, offering effortless programming and control.
- Lithium battery powered shades up to 2 years between charges*, feature soft start and stop technology for smooth and quiet operation.

*Battery Life dependent on Motor type and battery size



Nino Box Specifications

For illustration purposes only; not a system specification drawing

Colors

Available in 5 colors:

- White
- Warm White
- Black
- Char Brown
- Clear Anodized

Shade Types

- Box
- Roll

Height / Width

Min. width: 16"* Min. height: 22"

Max. width: 110" Max. height: 110"

*Quiet technology: Min. width 26" for 2Nm motor

Methods of Control

Integration and control

- Zigbee
- PoE
- RF Remote Control
- SI Ecosystem
- Native Control4
- SmartThings - App Control
- Bond Bridge Pro

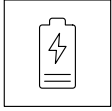


NIÑO BOX & ROLLER SHADES

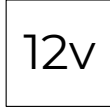
v 1.2 | July 2025

Technical Specifications

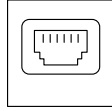
Compatible power sources



Rechargeable



12v DC



PoE

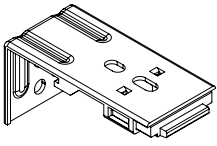
Flexible Configuration

- Create scenes, groups, and set times via SmartThings or TRO.Y & Helen

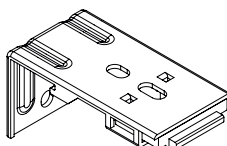
Environment

Operating temperature range is normal ambient (32 to 110 degrees), and humidity levels up to 90%.

Brackets



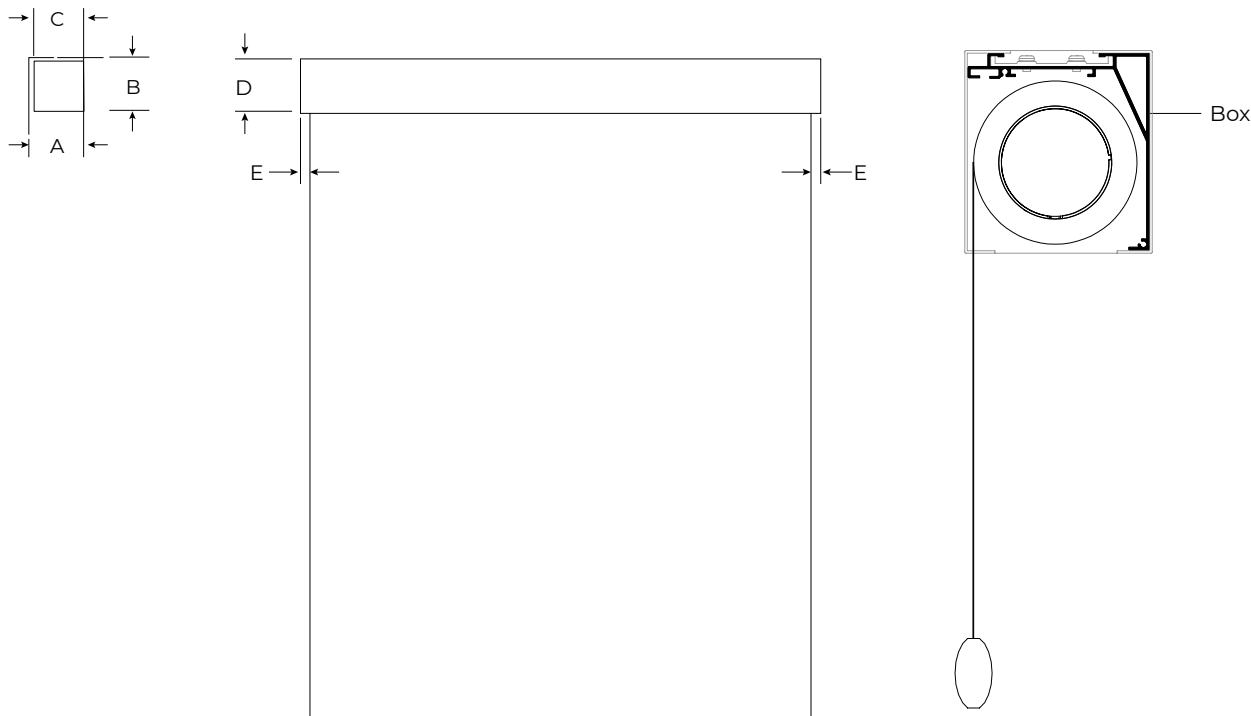
Nino Box brackets



Nino Roll brackets

Note: Nino Roll brackets are slightly smaller than Box brackets

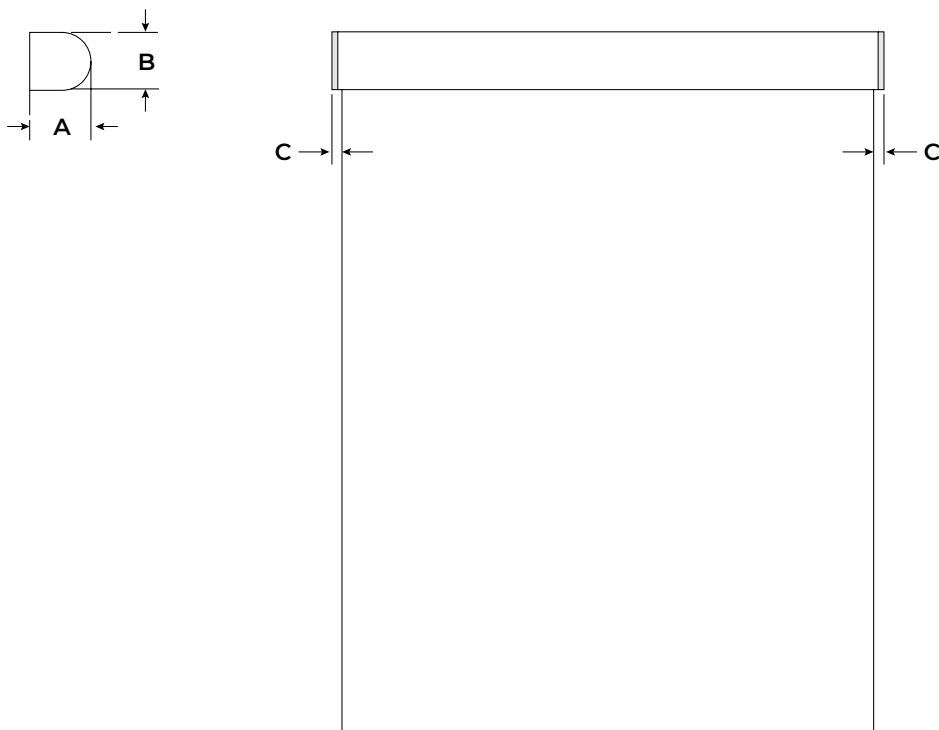
Nino Box Measurements



Dimension Callouts	Measurements
A	3 ⁹ / ₃₂ " (83.6mm)
B	3 ⁵ / ₁₆ " (84.1mm)
C	2 ¹⁵ / ₁₆ " (74.6mm)
D	3 ³ / ₁₆ " (80.6mm)
E	⁹ / ₁₆ " (14.6mm)

*Minimum shade width is 16" and maximum is 110"

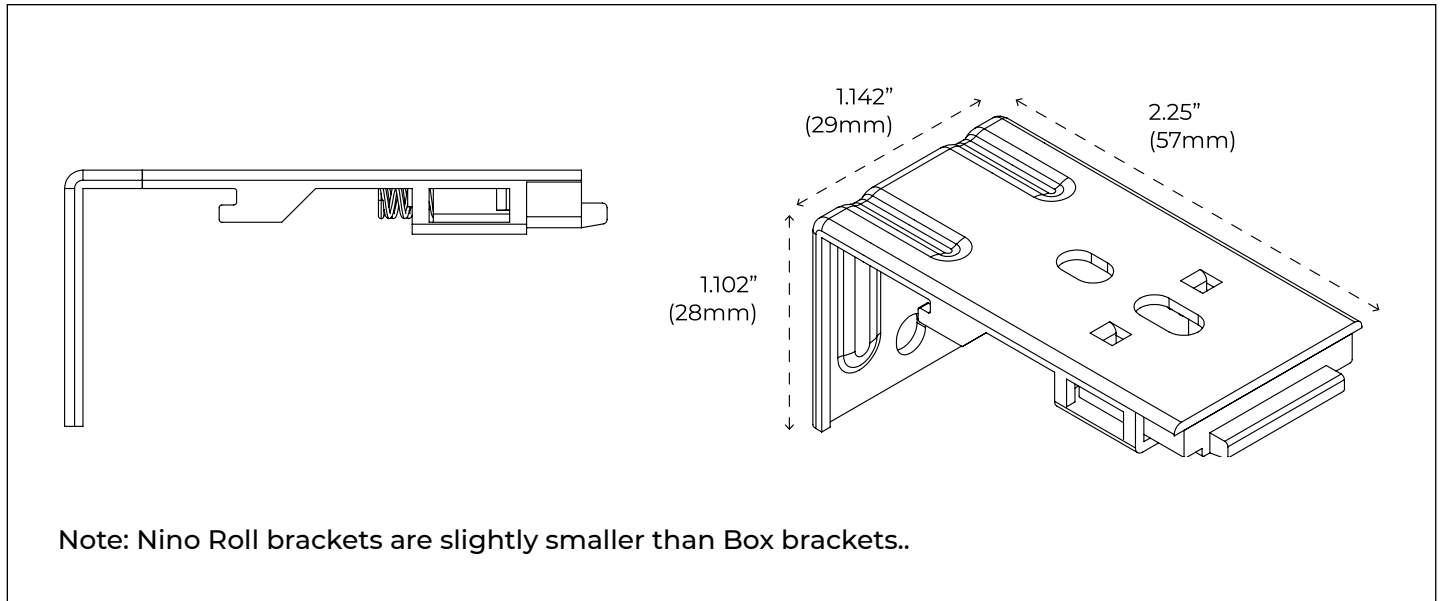
Nino Roll Measurements



Dimension Callouts	Measurements
A	2 7/8" (71.9mm)
B	1 15/16" (49mm)
C	5/8" (16mm)

*Minimum shade width is 16" and maximum is 110"

Nino Roll Bracket



Nino Box Bracket

